

Filter-Doc Corp.

Parts Catalog



303 East Brooks Road, Memphis, TN 38109

Filter-Doc Corporation

Filter-Doc Corp.

Yoke Assembly (Installed as Shown)

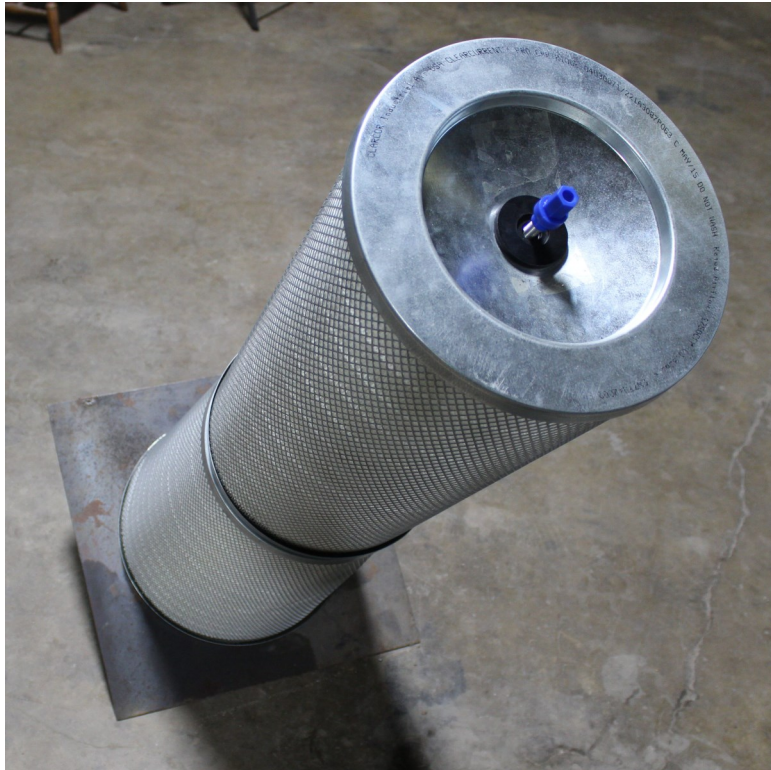


Figure 1: Yoke Assembly

Assembly includes the following:

5/16" Flanged Zinc Plated Mounting Bolt (x3)

See Page 3

OR

5/16" Flanged Teflon Coated Mounting Bolt (x3)

See Page 4

7/16"-20x6" SS Yoke Bolt Kit (Includes Nut and Flat Washer)

See Page 5

OR

3/8"-16x4" SS Yoke Bolt Kit (Includes Nut and Flat Washer)

See Page 6

Note: SS = 304 Stainless Steel

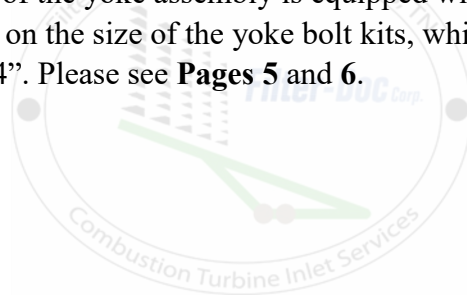
Filter-Doc Corp.

SS Yoke Assembly



Figure 2: SS Yoke Assembly

Description: Filter Doc Corp's SS Yoke Assembly, presented in **Fig. 2**, is fastened to the tube sheet wall using Filter Doc Corp's 5/16" flanged zinc plated **or** flanged teflon coated mounting bolts and SS inserts. The top of the yoke assembly is equipped with Filter Doc Corp's SS yoke bolt kit. The prices are based on the size of the yoke bolt kits, which come in the following sizes: 7/16"-20x6" **or** 3/8"-16x4". Please see **Pages 5 and 6**.





5/16" Flanged Zinc Plated Mounting Bolt

P/N: FDC-HFB5-031



Figure 3: 5/16" Flanged Zinc Plated Mounting Bolt

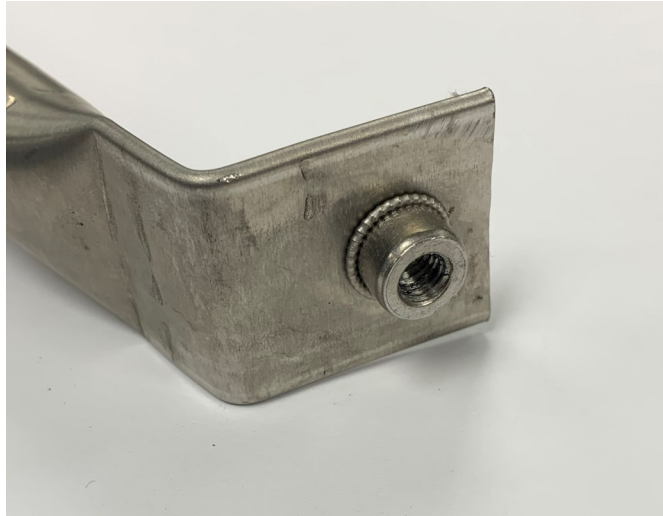


Figure 4: SS Inserts.



Figure 5: 5/16" Flanged Zinc Plated Mounting Bolt Assembly

Description: Filter Doc Corp's 5/16" Flanged Zinc Plated Mounting Bolt, shown in **Fig. 3**, is used to fasten the yoke assembly to the tube sheet wall using the SS inserts shown in **Fig. 4**. Assembly of the mounting bolt is presented in **Fig. 5**. There are a total of three mounting bolts per yoke assembly.

Note: SS inserts are the same for the flanged zinc plated mounting bolts and flanged teflon coated mounting bolts



5/16" Flanged Teflon Coated Mounting Bolt (For High Rust Environments)

P/N: FDC-H5-031-18-125T



Figure 6: 5/16" Flanged Teflon Coated Mounting Bolt



Figure 7: 5/16" Flanged Teflon Coated Mounting Bolts Assembly

Description: Filter Doc Corp's 5/16" Flanged Teflon Coated Mounting Bolt, shown in **Fig. 6**, is used to fasten the yoke assembly to the tube sheet wall in high rust environments using the SS inserts presented in **Fig. 4** on **Page 3**. Mounting of the yoke assembly to the tube sheet wall using the flanged teflon coated bolts is presented in **Fig. 7**. There are a total of three flanged teflon coated mounting bolts per yoke assembly.

Note: SS inserts are the same for the flanged zinc plated mounting bolts and flanged teflon coated mounting bolts



7/16"-20x6" SS Yoke Bolt Kit

P/N: FDC-53791-06

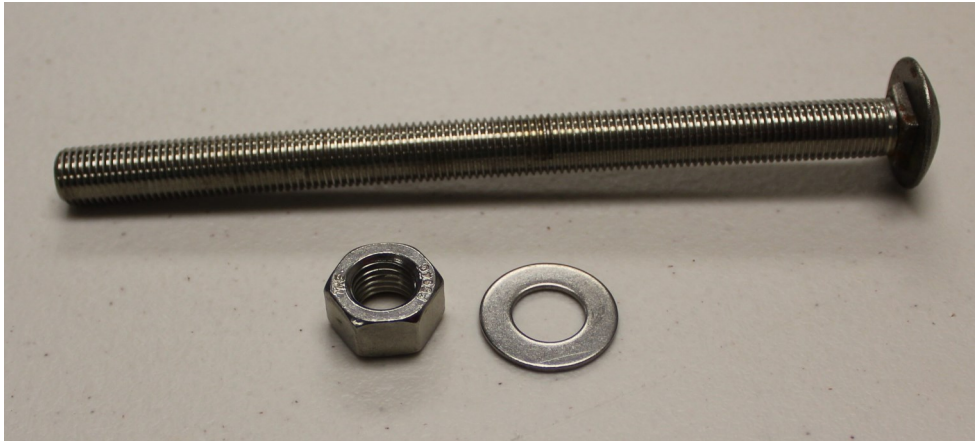


Figure 8: 7/16"-20x6" SS Yoke Bolt Kit



Figure 9: 7/16"-20x6" SS Yoke Bolt Kit Assembly

Description: The 7/16"-20x6" SS Yoke Bolt Kit is Filter Doc Corp's kit that consists of the bolt, washer and nut shown in **Fig. 8**. An illustration of the yoke bolt kit assembled at the top of the yoke assembly is presented in **Fig. 9**.

Note: Packaged in buckets of 100 kits

Filter-Doc Corp.

3/8"-16x4" SS Yoke Bolt Kit

P/N: FDC-53791-04

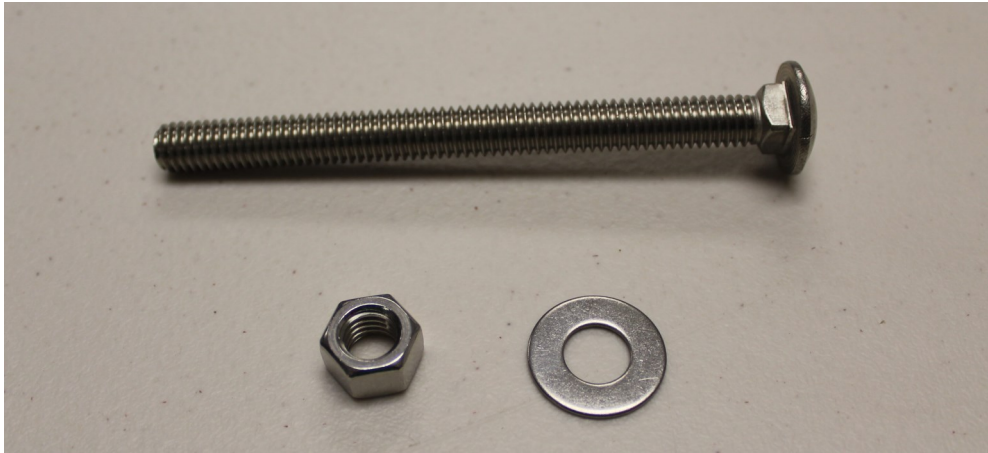


Figure 10: 3/8"-16x4" SS Yoke Bolt Kit



Figure 11: 3/8"-16x4" SS Yoke Bolt Kit Assembly

Description: : The 3/8"-16x4" SS Yoke Bolt Kit is Filter Doc Corp's kit that consists of the bolt, washer and nut presented in **Fig. 10**. An illustration of the yoke bolt kit assembled at the top of the yoke assembly is presented in **Fig. 11**.

Note: Packaged in buckets of 100 kits

Filter-Doc Corp.

Correcting Misalignment with Alignment Rings (Installed as Shown)



Figure 12: Alignment Ring Assembly [Foreign]



Figure 13: Alignment Ring Assembly [Domestic]

Assembly includes the following:

Alignment Ring [Domestic] (Black)

See Page 8

Alignment Ring [Foreign & Some Domestic] (Blue)

See Page 9



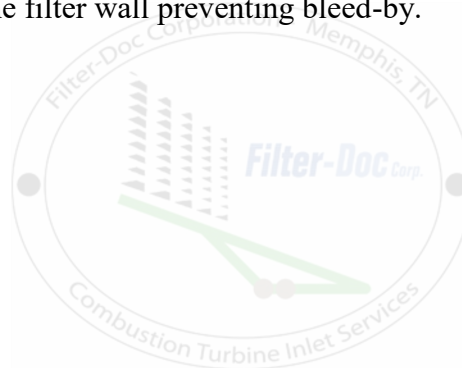
Alignment Ring [Domestic] (Black)

P/N: FDC-M1002



Figure 14: Alignment Ring [Domestic] (Black)

Description: By using Filter-Doc Corp's designed Alignment Ring in **Fig. 14**, the sets of filters can be correctly lined up allowing both filter gaskets to be properly aligned creating an air-tight seal between the filters and the filter wall preventing bleed-by.



Note: Fits most domestic turbine cartridge filters



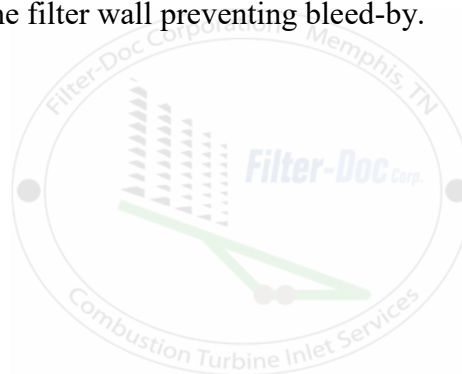
Alignment Ring [Foreign and Some Domestic] (Blue)

P/N: FDC-M1001



Figure 15: Alignment Ring [Foreign and Some Domestic] (Blue)

Description: By using Filter-Doc Corp's designed Alignment Ring in **Fig. 15**, the sets of filters can be correctly lined up allowing both filter gaskets to be properly aligned creating an air-tight seal between the filters and the filter wall preventing bleed-by.



Filter-Doc Corp.

Retainer Nuts (Installed as Shown)



Figure 16: Installed Retainer Nuts

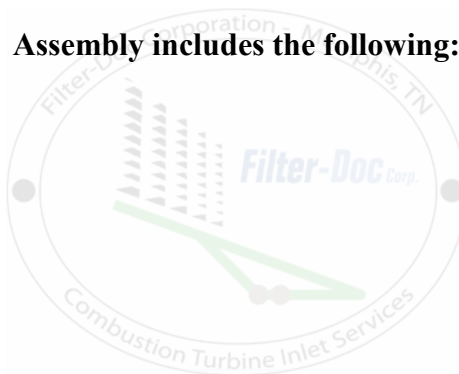
Assembly includes the following:

7/16" Retainer Nut (Blue)

See Page 11

3/8" Retainer Nut (Green)

See Page 12





7/16" Retainer Nut (Blue)

P/N: FDC-HN716RN



Figure 17: 7/16" Retainer Nut (Blue)

Description: Filter Doc Corp's 7/16" Retainer Nut, presented in **Fig. 17**, is used to secure the filter on the yoke assembly upon completion. The blue retainer nut is anchored onto the 7/16"-20x6" SS yoke bolt seen in **Fig. 8** on **Page 5** using a driver. Proper torquing results in both gaskets (conical and straight) sealing properly to create an air-tight seal between them as well as at the top of the yoke assembly.



Note: Sold Separately (Not included in yoke assembly or bolt kit)



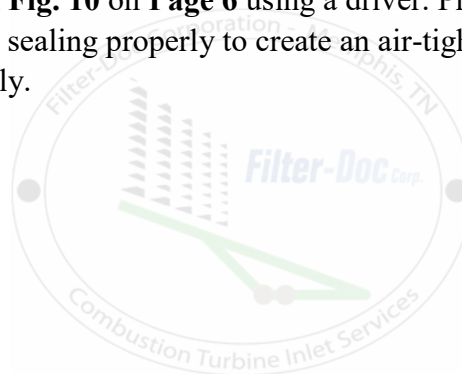
3/8" Retainer Nut (Green)

P/N: FDC-HN38RN



Figure 18: 3/8" Retainer Nut (Green)

Description: Filter Doc Corp's 3/8" Retainer Nut, presented in **Fig. 18**, is used to secure the filter on the yoke assembly upon completion. The green retainer nut is anchored onto the 3/8"-16x4" SS yoke bolt shown in **Fig. 10** on **Page 6** using a driver. Proper torqueing results in both gaskets (conical and straight) sealing properly to create an air-tight seal between them as well as at the top of the yoke assembly.



Note: Sold Separately (Not included in yoke assembly or bolt kit)

Filter-Doc Corp.

T-Grid Assembly (Installed as Shown)



Figure 19: T-Grid Assembly

Assembly includes the following:

Filter Jack	See Page 14
Outside Mount Pre-Filter Frame	See Page 15
4-Point SS Anchor 1/4"-20	See Page 16
2-Point SS Anchor 1/4"-20	See Page 17
4-Point SS Saddle	See Page 18
2-Point SS Saddle	See Page 19
1/4"x20 Flanged Serrated Teflon Coated Nut	See Page 20

Filter-Doc Corp.

Filter Jacks

P/N: FDC-R001



Figure 20: Filter Jack

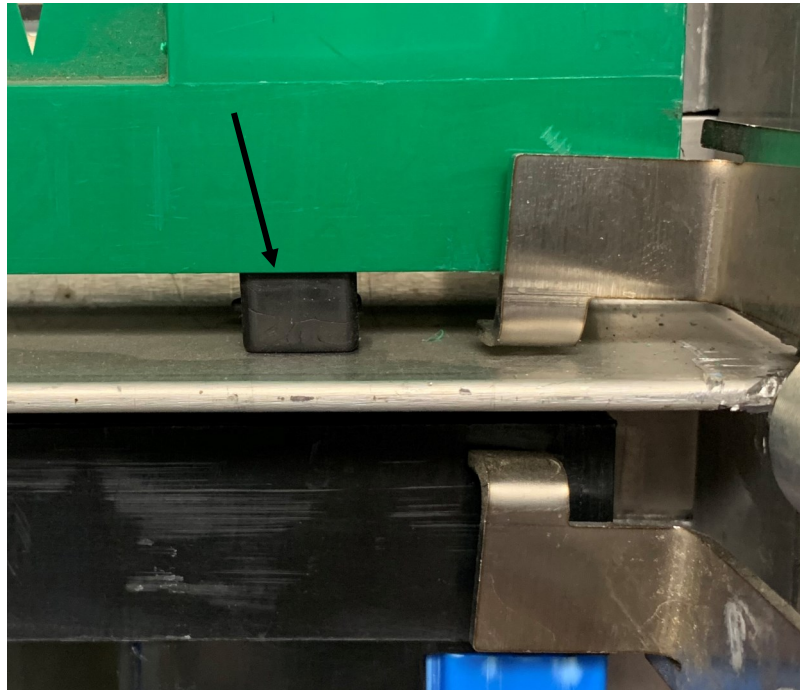


Figure 21: Filter Jack Assembly (2 Per Filter)

Description: Filter Doc Corp's Filter Jack, presented in **Fig. 20**, is inserted beneath the panel filters in T-Grid framing to lift them and prevent sagging to ensure proper filter alignment. **Figure 21** presents the installation of the filter jacks.





Outside Mount Pre-Filter Frame

P/N: FDC-002



Figure 22: Outside Mount Pre-Filter Frame

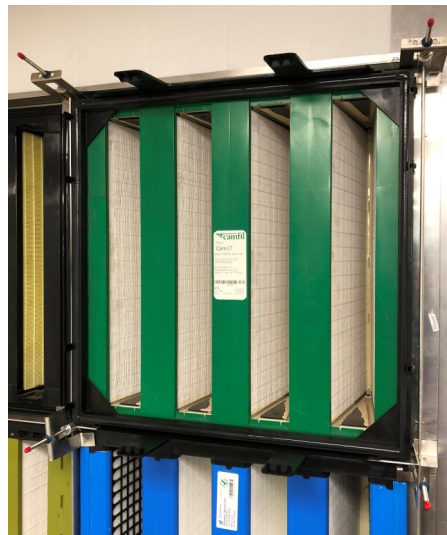


Figure 23: Outside Mount Pre-Filter Frame Assembly

Description: Figure 22 presents Filter Doc Corp's Outside Mount Pre-Filter Frame which has been designed to mount, as illustrated in Fig. 23, onto most 24"x24" ASHRAE "V" Cell Filters. The frame will hold a standard 24"x24"x4" outside mount pre-filter securely to the final filter and seal both sides preventing bleed-by. These frames can be snapped on and taken off for multiple uses.

Filter-Doc Corp.

4-Point Anchor

P/N: FDC-M75104-CSC



Figure 24: 4-Point Anchor with SS Set Screws and 1/4"-20 SS All Thread Studs (4-Point Anchor Assembly)

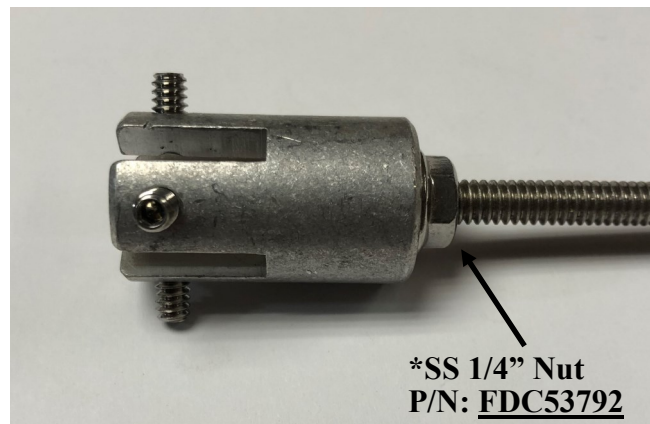


Figure 25: 4-Point Anchor with SS 1/4" Nut (4-Point Anchor Assembly)

Description: In T-Grid applications, the 4-Point Anchor, shown in **Figs 24** and **25**, slides onto the T-Grid wall at all interior four-way cross-sections. The anchor is made out of aluminum and has SS hardware (set screws, 1/4" nut and 1/4"-20 all thread studs) to prevent rusting. The all thread studs allow for the assembly of Filter Doc Corp's 4-point SS saddle presented in **Fig. 28** on **Page 18**.

The all thread studs are available in multiple lengths: 2 1/2"(Standard), 3", 4" and 5".

***Note:** SS Hardware (set screws, 1/4" nut and all thread studs) is the same for 2-point and 4-point anchors



2-Point Anchor

P/N: FDC-M75102-CEC

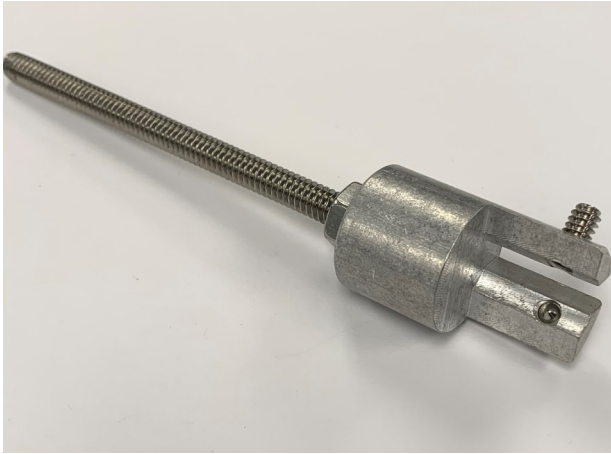


Figure 26: 2-Point Anchor with SS Set Screws and 1/4"-20 SS All Thread Studs (2-Point Anchor Assembly)

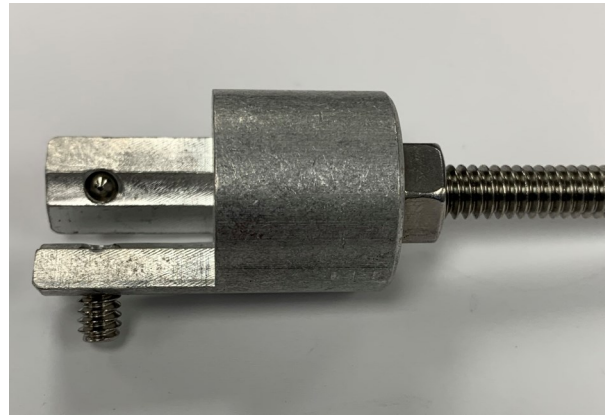
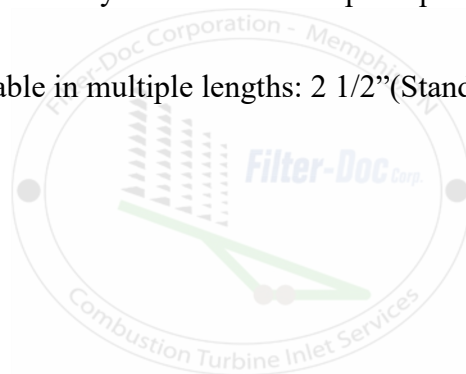


Figure 27: 2-Point Anchor with SS 1/4" Nut (2-Point Anchor Assembly)

Description: In T-Grid applications, the 2-Point Anchor, shown in **Figs 26** and **27**, slides onto the T-Grid wall at all locations along the perimeter of the wall. The anchor is made out of aluminum and has SS hardware (set screws, 1/4" nut and all thread studs) to prevent rusting. The all thread studs allow for the assembly of Filter Doc Corp's 2-point SS saddle presented in **Fig. 30** on **Page 19**.

The all thread studs are available in multiple lengths: 2 1/2" (Standard), 3", 4" and 5".



***Note:** SS Hardware (set screws, 1/4" nut and all thread studs) is the same for 2-point and 4-point anchors

Filter-Doc Corp.

4-Point SS Saddle

P/N: FDC-4Saddle

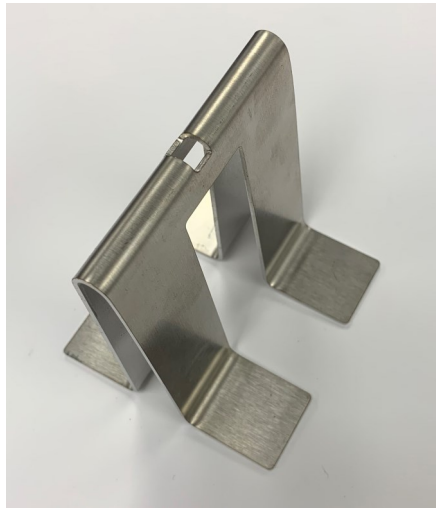


Figure 28: 4-Point SS Saddle

Rubber End Caps
P/N: FDC-TRVCAP-025-500-RED

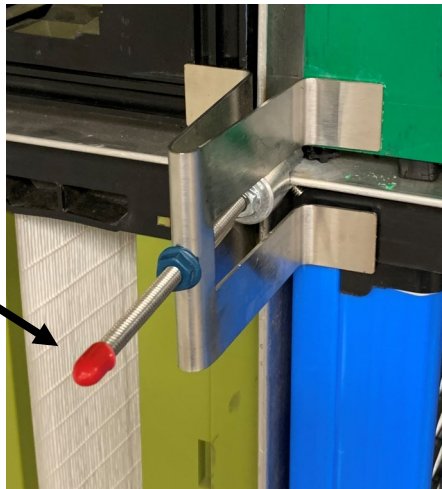


Figure 29: T-Grid Assembly (4-Point Hardware)

Description: Figure 28 presents Filter Doc Corp's 4-Point SS Saddle that is assembled on the 4-point anchor at the center of the cross-section of four panel filters in T-Grid applications. The anchor and the saddle are both anchored down with Filter Doc Corp's 1/4"-20 flanged serrated teflon coated nut as seen in Fig. 29. Please see Page 20 for the teflon coated nut.

2-Point SS Saddle

P/N: FDC-2Saddle



Figure 30: 2-Point SS Saddle

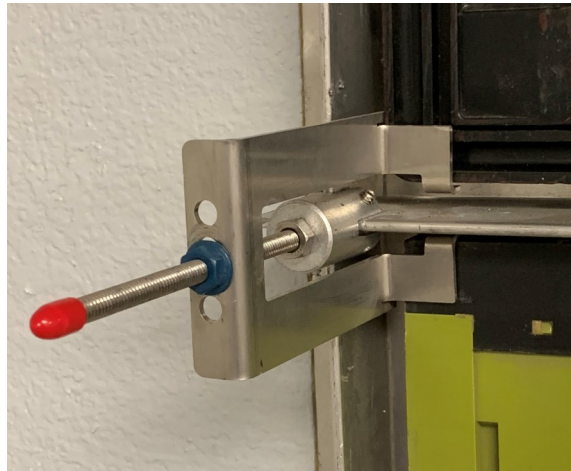


Figure 31: T-Grid Assembly (2-Point Hardware)

Description: Figure 30 presents Filter Doc Corp's 2-Point SS Saddle that is assembled on the 2-point anchor around the perimeter of the T-Grid to ensure the perimeter panel filters are secured. The anchor and the saddle are both secured with Filter Doc Corp's 1/4"-20 flanged serrated teflon coated nut as seen in Fig. 31. Please refer to Page 20 for the teflon coated nut.



1/4"-20 Flanged Serrated Teflon Coated Nut

P/N: FDC-Flange

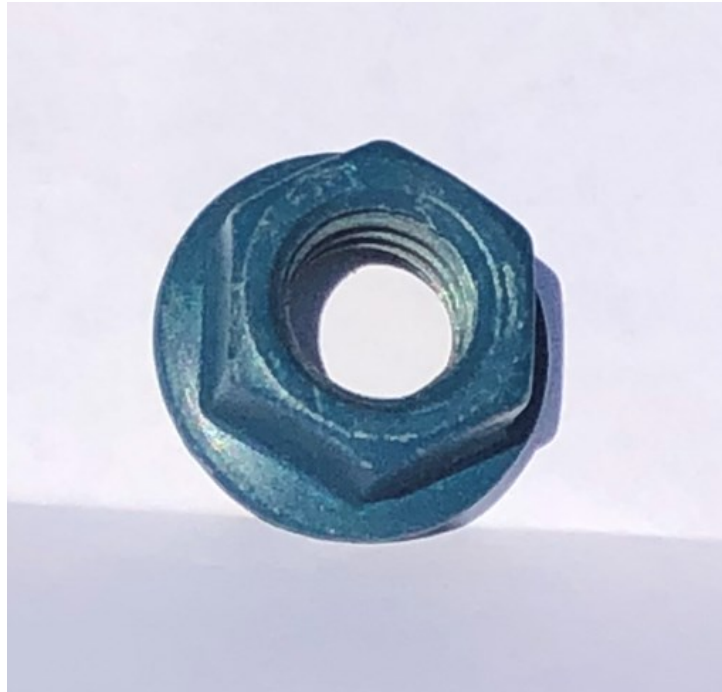
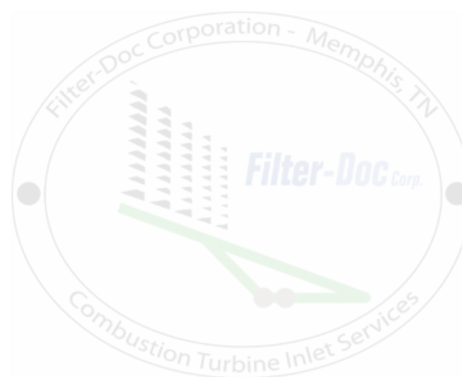


Figure 32: 1/4"-20 Flanged Serrated Teflon Coated Nut

Description: Filter Doc Corp's 1/4"-20 Flanged Serrated Teflon Coated Nut, presented in **Fig. 32**, is used in both the T-Grid and tube grid applications. It is used to fasten the 2-point and 4-point saddles shown in **Figs 29** and **31** on **Pages 18** and **19** for T-Grid applications and is used to fasten Filter Doc Corp's 2 1/4" SS interior retainer clip and SS angle perimeter retainer clip in **Figs 36** and **38** on **Pages 23** and **24** for tube grid applications.



Filter-Doc Corp.

Tube Grid Assembly (Installed as Shown)

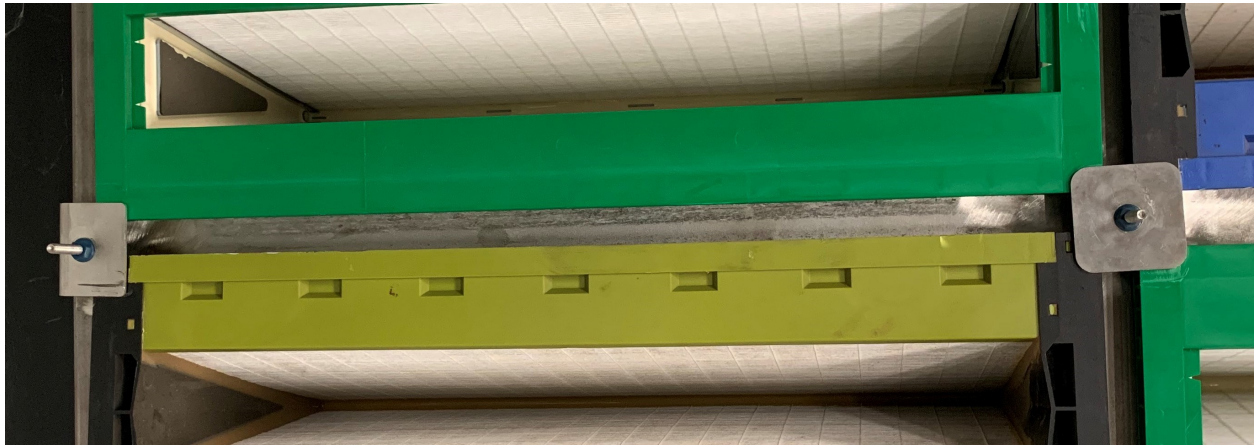


Figure 33: Tube Grid Assembly

Assembly includes the following:

1/4"-20 Nelson Stud (Multiple Lengths)

See Page 22

Outside Mount Pre-Filter Frame

See Page 15

2 1/4" SS Interior Retainer Clip

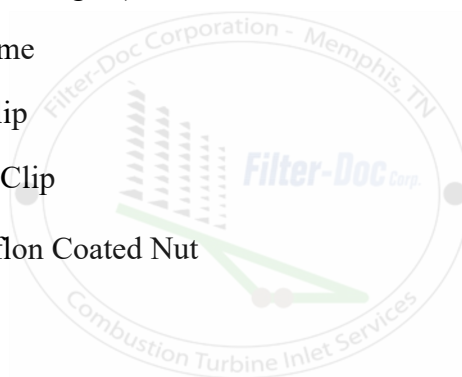
See Page 23

SS Angle Perimeter Retainer Clip

See Page 24

1/4"x20 Flanged Serrated Teflon Coated Nut

See Page 20



Filter-Doc Corp.

1/4"-20 Nelson Stud (Multiple Lengths)

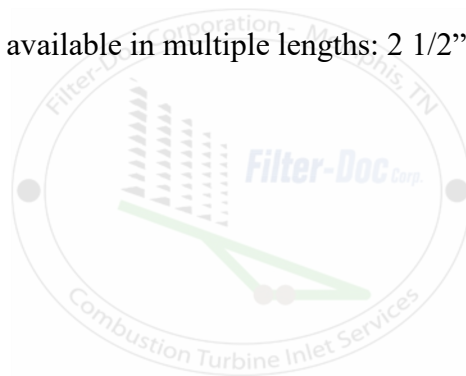
P/N: Varies Based on Length



Figure 34: 1/4"-20 Nelson Stud

Description: The 1/4"-20 Nelson Stud, presented in **Fig. 34**, is welded to the tube grid at all cross-sections of the tubes (interior and perimeter). Filter Doc Corp's 2 1/4" SS interior retainer clip or SS angle perimeter retainer clip is assembled on the Nelson stud to anchor down the panel filters. The retainer clips are secured using the 1/4"-20 flanged serrated teflon coated nut seen in **Fig. 32** on **Page 20**.

The 1/4"-20 Nelson studs are available in multiple lengths: 2 1/2" (Standard), 3", 4" and 5".



Filter-Doc Corp.

2 1/4" SS Interior Retainer Clip

P/N: FDC-SQ 2



Figure 35: 2 1/4" SS Interior Retainer Clip



Figure 36: Tube Grid Assembly
(2 1/4" SS Interior Retainer Clip)

Description: Figure 35 presents Filter Doc Corp's 2 1/4" SS Interior Retainer Clip that is only used in tube grid applications. The interior retainer clip is assembled to secure four panel filters at the center of all four-way cross-sections throughout the interior of the tube grid. The retainer clip is fastened down on the 1/4"-20 SS Nelson stud using the 1/4"-20 flanged serrated teflon coated nut as seen in Fig. 36. Please see Page 22 for the 1/4"-20 Nelson stud and Page 20 for the teflon coated nut.



SS Angle Perimeter Retainer Clip

P/N: FDC-ANG



Figure 37: SS Angle Perimeter Retainer Clip

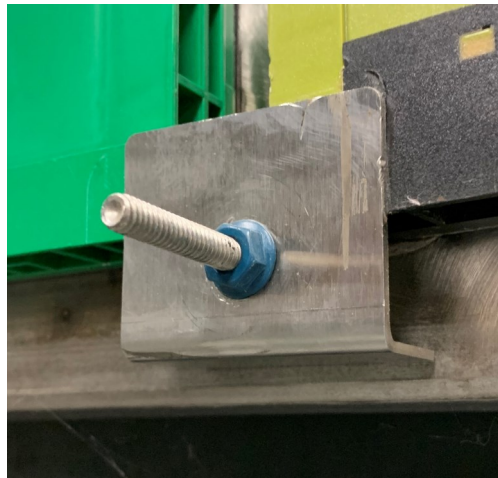


Figure 38: Tube Grid Assembly
(SS Angle Perimeter Retainer Clip)

Description: Figure 37 presents Filter Doc Corp's SS Angle Perimeter Retainer Clip that is only used in tube grid applications. The perimeter retainer clip is assembled to secure the panel filters around the perimeter of the tube grid. The perimeter retainer clip is secured onto the 1/4"-20 SS Nelson stud using the 1/4"-20 flanged serrated teflon coated nut as seen in Fig. 38. Please see Page 22 for the 1/4"-20 Nelson stud and Page 20 for the teflon coated nut.

Filter-Doc Corp.

Coalescing Blanket Assembly (Installed as Shown)



Figure 39: Coalescing Blanket Assembly

Assembly includes the following:

Coalescing Pre-Filter Media Retainer Washer

See Page 26

Description: Filter Doc Corp's Coalescing Pre-Filter Media, as seen in **Fig. 39**, collects moisture and particles from the air prior to entering the main filtration devices.



Coalescing Pre-Filter Media Retainer Washer

P/N: FDC-29441

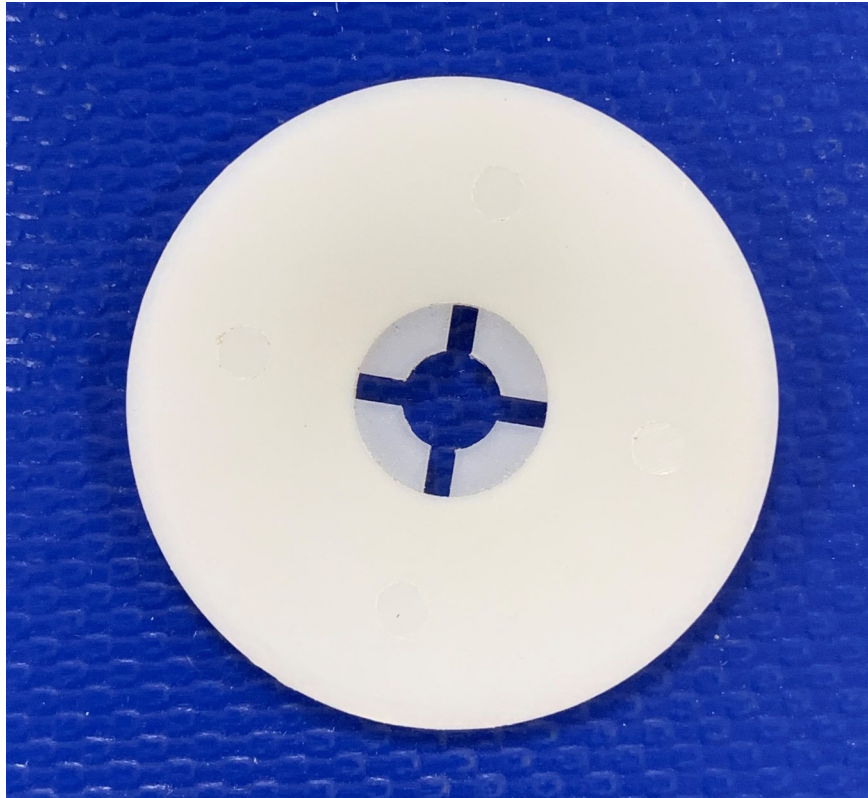


Figure 40: Coalescing Pre-Filter Media Retainer Washer

Description: Filter Doc Corp's Coalescing Pre-Filter Media Retainer Washer, shown in **Fig. 40**, is used to secure the coalescing pre-filter media presented in **Fig. 39** on **Page 25**.





Contact Information:

	<u>Email</u>	<u>Cell</u>
Robert Murphree—President	Robert@filter-doc.com	901.734.5954
Greg Murphree—VP Sales	Greg@filter-doc.com	901.412.1195
Amy Shockley—Office Manager	Amy@filter-doc.com	901.396.3625
Matt Baker—Engineer	Matt@filter-doc.com	901.494.4077

